

# Gleneagles Hospital Hong Kong

Helping shape Hong Kong's private healthcare  
through innovation, transparency and service

透過創新、透明度和優質服務以助塑造  
香港私營醫療市場



Gleneagles Hospital  
HONG KONG  
港怡醫院

ON YOUR SIDE  
護您同行

# About Gleneagles Hospital Hong Kong

## 關於港怡醫院

Gleneagles Hospital Hong Kong (Gleneagles) is a multi-specialty private teaching hospital designed to provide Hong Kong people with high-quality and accessible healthcare services.

Located at Wong Chuk Hang on Hong Kong Island South, Gleneagles provides 500 beds, cutting-edge medical technologies and a comprehensive range of clinical services spanning more than 35 specialties and subspecialties.

港怡醫院是一所提供多個專科醫療服務的私營教學醫院，為香港市民提供高質素且可負擔的醫療服務。

港怡醫院座落於港島南區黃竹坑，設有500個床位，並配以先進的醫療設備及儀器，提供全面的臨床服務，涵蓋超過35個專科及分科。

## Key Services

### 主要服務簡介

### Specialist Outpatient Clinics 專科門診 G/F & 1/F 地下大堂及一樓

Gleneagles offers a comprehensive range of specialist outpatient services spanning 16 specialties through 15 clinics. Services are available by appointment.

港怡醫院提供全面的專科門診服務，設15個專科門診診所涵蓋16個專科。可透過預約安排專科門診服務。

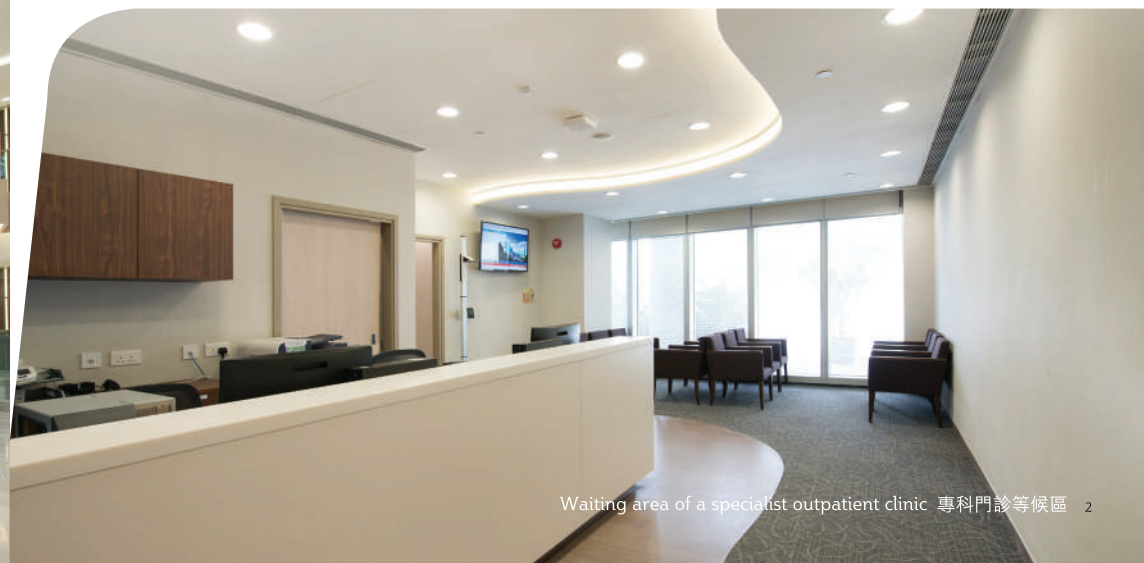
### Specialist Outpatient Clinics include 專科門診服務包括:

- |                                 |   |
|---------------------------------|---|
| Behavioural Health 行為健康         | Neurology & Neurosurgery 腦神經內外科               |
| Breast 乳房保健                     | Obstetrics & Gynaecology 婦科及產科                |
| Cardiology 心臟科                  | Ophthalmology / Eye 眼科                        |
| Chinese Medicine 中醫             | Orthopaedic Surgery 骨科                        |
| General Medicine 普通內科           | Otorhinolaryngology / Ear, Nose & Throat 耳鼻喉科 |
| General Surgery 外科              | Paediatrics 兒科                                |
| Haematology & Oncology 血液病理及腫瘤科 | Skin & Laser 皮膚及光學治療                          |
| Health Screening 健康檢查           | Urology 泌尿科                                   |

Service hotline 服務熱線:  
+852 2122 1333

Service hours 服務時間:  
Monday – Friday 星期一至星期五 9:00 am – 6:00 pm  
Saturday 星期六 9:00 am – 1:00 pm  
Sunday and public holiday Closed 星期日及公眾假期 休息

\* Cardiology Clinic and Health Screening Clinic open from 8 am  
心臟科門診及健康檢查中心服務時間由早上八時開始





## 24-hour Outpatient and Emergency 24小時門診及急症室

G/F 地下大堂

24-hour Outpatient and Emergency Department has a dedicated entrance for patients who need immediate medical attention. The triage room and consultation rooms are conveniently located within the same area. Consultation and treatments are provided by a team of A&E specialists and specialist nurses trained to handle critical medical emergencies.

24小時門診及急症室設有專門的入口，為需要緊急就醫的病人提供便捷的通道。為方便求診人士，分流室和診症室均設於同一個區域內。所有診症及治療由專業的急症科專科醫生及護士團隊主理，以應付各種危急病症。

## Endoscopy Centre 內視鏡中心 1/F 一樓

The Endoscopy Centre provides a full range of endoscopy services with state-of-the-art endoscopic imaging systems for diagnosis and treatment of diseases. The Centre provides 27 endo bays as patients' waiting and recovery area.

內視鏡中心提供多種內視鏡檢查服務，配備先進的內視鏡造影系統，為病人診症及治療疾病。內視鏡中心提供27個候診及休息區。

Service hotline 服務熱線:  
+852 2122 1333

Service hours 服務時間:  
Monday – Saturday 星期一至星期六 7:30 am – 4:00 pm  
Sunday and public holiday Closed 星期日及公眾假期 休息



Waiting area of 24-hour Outpatient and Emergency Department

24小時門診及急症室等候區



Procedure room of Endoscopy Centre  
內視鏡中心治療室

## Radiology Department 放射診斷中心 LG/F 低層地下

The Radiology Department provides radiology services including bone mineral densitometry (BMD), fluoroscopic examinations and general radiology services. Other imaging services we provide include computed tomography (CT) scan, magnetic resonance imaging (MRI), mammography, ultrasound scan, nuclear medicine, Positron Emission Tomography – Magnetic Resonance Imaging (PET-MR) and Positron Emission Tomography – Computed Tomography (PET-CT) Scan.

放射診斷中心為門診及住院病人提供放射診斷服務，包括骨質密度檢測、螢光鏡檢查和一般放射學檢查。其他影像服務包括電腦斷層掃描（CT）、磁力共振檢查（MRI）、乳房X光檢查、超聲波掃描、核子醫學、正電子磁力共振掃描（PET-MR），以及正電子電腦斷層掃描（PET-CT）。

Service hotline 服務熱線:  
+852 3153 9965

Service hours 服務時間:  
Monday – Saturday 星期一至星期六 9:00 am – 6:00 pm  
Sunday and public holiday Closed 星期日及公眾假期 休息



PET-CT 正電子電腦斷層掃描



PET-MR 正電子磁力共振掃描

## Radiotherapy and Oncology Centre 放射治療及腫瘤科中心

B/F 地庫

The Centre is equipped with state-of-the-art medical devices including a CT simulator and a TrueBeam linear accelerator.

The professional team at the Centre provides a wide range of radiotherapy services including volumetric modulated arc therapy, intensity modulated radiotherapy, stereotactic radiotherapy, image-guided radiation therapy, 3D conformal radiotherapy and electron therapy.

中心配備先進醫療儀器，包括電腦軸向斷層掃描機及TrueBeam直線加速器。

中心的專業團隊提供一系列放射治療服務，包括容積調控放射治療、強度調控放射治療、立體定位放射治療、影像導向放射治療、三維適形放射治療及電子束放射治療。

## Chemotherapy Centre 化療中心 1/F 一樓

Chemotherapy Centre administers chemotherapy, targeted therapy and immunotherapy for cancer patients.

The Centre operates in a day centre format for patients whose infusion time is less than six hours, provides care and patient education for various types of central venous catheters and self-care strategies during anticancer treatment.

化療中心為患癌症的病人提供化療、標靶治療及免疫治療服務。

中心以日間中心形式為需要少於六小時輸液的病人而設，並為在抗癌過程中的病人提供各種中央靜脈接入裝置的護理和教育，以及自我照顧策略。



TrueBeam linear accelerator 直線加速器



Treatment area of Chemotherapy Centre  
化療中心治療區

## Dialysis Centre 腎臟透析中心 1/F 一樓

Dialysis Centre features nine state-of-the-art dialysis machines of the latest model, providing online haemodiafiltration treatments for patients. Each dialysis chair comes with individual television for a more comfortable treatment. The Centre also manages a dialysis machine in Critical Care Unit, complemented by a portable reverse osmosis water treatment machine for emergency services.

腎臟透析中心配備了九部最新型號的透析儀器，為病人提供線上血液透析過濾治療。每張透析椅均設獨立電視，讓病人更舒適地進行療程。為服務緊急病人，中心亦於危重症監護部設置一部透析儀器，並配有一部流動式逆滲透水處理機。

## Health Screening Clinic 健康檢查中心 G/F 地下

Health Screening Clinic provides a variety of comprehensive health check packages that cover physician's examination, blood test, diagnostic imaging, eye checkups, cardiac assessment and dietetic consultation. A detailed checkup report with attending physician's consultation facilitates appropriate referral treatment services.

健康檢查中心提供全面的身體健康檢查、血液檢驗、X光檢查、視力檢驗及心臟功能評估，並有註冊營養師作營養諮詢。駐院專科醫生負責作詳盡分析及講解報告，並就個別情況提供適當的轉介和治療服務。

Service hotline 服務熱線:  
+852 2122 1333

Service hours 服務時間:  
Monday – Friday 星期一至星期五 8:00 am – 6:00 pm  
Saturday 星期六 8:00 am – 1:00 pm  
Sunday and public holiday Closed 星期日及公眾假期 休息



Dialysis Centre 腎臟透析中心



Health Screening Clinic 健康檢查中心



## Critical Care Unit 危重症監護部 2/F 二樓

Critical Care Unit comprises Intensive Care Unit (ICU), High Dependency Unit (HDU), Cardiac Care Unit (CCU) and Paediatric Intensive Care Unit (PICU). There are a total of 32 beds in the Critical Care Unit.

Patients' vital signs are transmitted to a central nursing station, allowing the team to respond to any changes swiftly and efficiently. It is staffed 24 hours a day by specialists and critical care nurses.

危重症監護部設有深切治療病房、加護病房、心臟加護病房，以及兒童深切治療病房，合共32張病床。

病人的主要症狀將會傳送至中央護理站，由資深護士緊密監察，讓醫護人員迅速且有效地回應病人所需及變化，並由專科醫生及深切治療護士24小時主理。



## Cardiac Catheterisation Laboratory 心臟導管治療中心 2/F 二樓

Cardiac Catheterisation Laboratory offers comprehensive cardiac services including investigation and treatment with its state-of-the-art technology and highly-trained clinical staff.

With operating theatre standard, Cardiac Catheterisation Laboratory is equipped with the most advanced integrated X-ray and intravascular ultrasound imaging system to provide invasive diagnostic or interventional procedures such as coronary angiography and angioplasty, pacemaker insertion, and electrophysiological study.

The Cardiac Catheterisation Laboratory provides 24-hour service under emergency situation.

心臟導管治療中心配備先進醫療器材及經驗豐富的醫療團隊，為病人提供全面的心臟健康檢查及治療服務。

具備標準手術室規格的心臟導管治療中心配以最新的心臟導管X光顯影及血管腔內超聲顯像虛擬組織系統，為病人提供支架植入治療（俗稱通波仔）、電生理心臟檢查、心臟起搏器置入等介入性治療。

心臟導管治療中心亦提供24小時緊急服務。



## Inpatient Rooms 住院病房

### Setting new standards of patient experience 為病人帶來全新體驗

We provide a suite of room classes to meet different patients' needs. All our inpatient rooms enjoy open views with lush greenery, complemented by warm, calming interiors and furnishings.

Our two-bedded standard rooms, equipped with en-suite bathrooms, boast ample space and comfort to ensure a restful stay for patients.

我們提供一系列的房間種類，以迎合不同病人的需要和喜好。所有住院病房的景觀開揚，盡享綠意盎然的景色，並配以溫暖柔和的室內裝潢及佈置。

我們的標準房只設兩張床，並備有浴室，營造充足的空間感和舒適感，務求為病人提供舒適的療養環境和住院體驗。

### Inpatient Room Types 住院病房類型

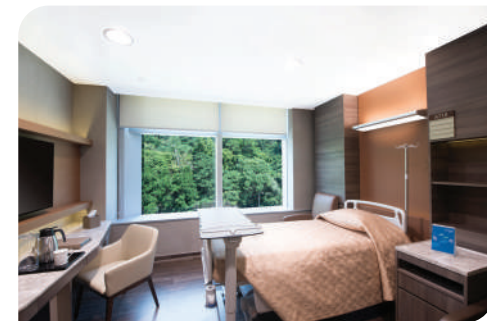
- | Standard 標準房
- | Semi-Private Double 半私家雙人房
- | Semi-Private Single 半私家單人房
- | Private Single 私家房
- | Junior Suite 豪華套房
- | VIP Suite 貴賓套房



Standard 標準房



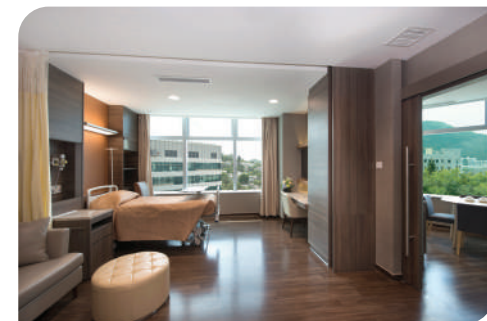
Semi-Private Double 半私家雙人房



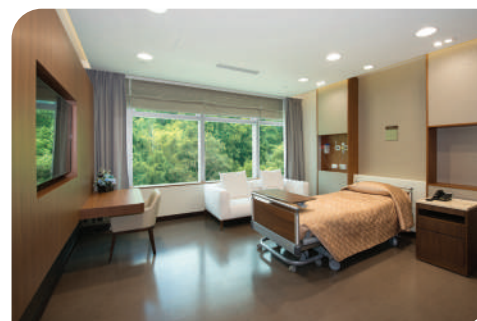
Semi-Private Single 半私家單人房



Private Single 私家房



Junior Suite 豪華套房



VIP Suite - Imperial 貴賓套房 - 帝皇



VIP Suite - Presidential 貴賓套房 - 總統



## All-inclusive Medical Packages 全包形式醫療套餐

To ensure patients' peace of mind, Gleneagles offers fixed-price, all-inclusive medical packages that carry defined lengths of stay. The packages cater to complications that require re-operation and intensive care during the stipulated lengths of stay.

The package fees include doctor's fee, room charges, diagnostic and treatment procedures, operating theatre charges, anaesthesia, nursing care, medications, equipment, consumables, implants and meals.

Please visit the hospital website [www.gleneagles.hk](http://www.gleneagles.hk) for further information on medical packages.

為確保病人倍感安心，本院提供定額及全包形式的醫療套餐，並設定了住院日數。醫療套餐的保障範圍亦包括於指定住院日數內出現的併發症，包括再接受手術和深切治療。

醫院套餐包括醫生費、病房費、診斷程序和手術療程、手術室費、麻醉費用、護理費用、藥物、儀器、治療所需的消耗品、植入醫療物料費用及膳食費。

請瀏覽醫院網頁[www.gleneagles.hk](http://www.gleneagles.hk)查看有關醫療套餐的詳情。

## Fee Advisory 費用諮詢

Fee advisory service is provided to all patients before admission. Patients are also advised on any additional charges before proceeding with any services or procedures.

院方為所有病人於入院前提供費用諮詢服務，向病人詳細解釋有關服務之收費詳情。在使用額外服務前，亦會先向病人講解相關收費，以便病人在清楚收費的情況下作出決定。

## Comprehensive Range of Medical Specialties 全面的專科服務

### Medical Specialties and Subspecialties 專科及分科

- | Anaesthesiology 麻醉科
- | Cardiology 心臟科
- | Cardiothoracic Surgery 心胸肺外科
- | Chinese Medicine 中醫
- | Clinical Microbiology & Infectious Diseases 臨床微生物及感染學
- | Critical Care / Intensive Care Medicine 深切治療科 / 危重病學
- | Dermatology 皮膚科
- | Emergency Medicine 急症科
- | Endocrinology, Diabetes & Metabolism 內分泌及糖尿科
- | Gastroenterology & Hepatology 腸胃及肝臟科
- | General Surgery 外科
- | Geriatric Medicine 老人科
- | Gynaecology 婦科
- | Haematology & Oncology 血液病理及腫瘤科
- | Haemodialysis 血液透析科\*
- | Immunology & Allergy 免疫學及過敏科
- | Internal Medicine 內科
- | Neonatology 初生嬰兒科\*
- | Nephrology 腎科
- | Neurology 神經內科
- | Neurosurgery 神經外科
- | Nuclear Medicine 核子醫學科
- | Obstetrics 產科
- | Ophthalmology / Eye 眼科
- | Oral & Maxillofacial Surgery 口腔頰面外科
- | Orthopaedic Surgery 骨科
- | Otorhinolaryngology / ENT 耳鼻喉科
- | Paediatric Medicine 兒科
- | Paediatric Surgery 小兒外科
- | Pain Management 疼痛醫學
- | Plastic Surgery 整形外科
- | Psychiatry / Mental Health 精神科
- | Radiotherapy & Oncology 放射治療及腫瘤科
- | Respiratory Medicine 呼吸系統科
- | Rheumatology 風濕病科
- | Urology 泌尿外科

\* Available soon 即將投入服務



## Facilities and Services 醫療設施與服務

- | 24-hour Outpatient and Emergency  
24小時門診及急症室
- | Cardiac Catheterisation Laboratory  
心臟導管治療中心
- | Chemotherapy Centre 化療中心
- | Clinical Laboratory 臨床病理學
- | Critical Care Unit 危重症監護部
- | Dietetic Services 營養服務
- | Endoscopy Centre 內視鏡中心
- | Neonatal Intensive Care Unit & Special Baby Care Unit  
初生嬰兒深切治療部及嬰兒特別護理部
- | Neuro-interventional Laboratory\*  
腦神經介入治療\*
- | Operating Theatres 手術室
- | Pharmacy Services 藥劑服務
- | Radiotherapy & Oncology Services  
放射治療及腫瘤服務
- | Radiology Services 放射診斷服務
- | Rehabilitation Services 復康服務
- | Renal Dialysis 腎臟透析服務
- | Sample Collection Centre 樣本收集部

\*Available soon 即將投入服務

## Gleneagles Bistro 港怡軒

Gleneagles Bistro serves daily breakfast, lunch, afternoon tea and dinner with various choices of set menus and a selection of à la carte dishes for our patients and visitors.\*

港怡軒每天供應早餐、午餐、下午茶及晚餐，設有不同種類套餐，以及一系列精選單點菜式供病人及訪客選擇。\*

*\*Patients are suggested to be served by our in-ward dining services.  
我們建議病人享用本院的病房送餐服務。*

Gleneagles Bistro Service Hotline  
港怡軒服務熱線

+852 3153 9912

Service Hours  
服務時間

7:00 am – 8:30 pm

Location  
位置

LG/F 低層地下



## Opening Hours 開放時間

The hospital is open to visitors between 8:00 am and 10:00 pm to ensure enough rest for our patients.

Only two visitors are allowed at a time.

The Admission and Cashier Office opens 24 hours.

訪客探訪時間為上午8時至晚上10時，以確保病人有充足的休息。

每次只限兩位訪客。

入院登記及繳費處提供24小時服務。







## Free Shuttle Service

### 免費專車服務

Gleneagles Hospital Hong Kong provides free shuttle bus service for the public between MTR Ocean Park Station (Exit A) and the hospital (main entrance).

港怡醫院為市民提供免費專車服務往來港鐵海洋公園站(A出口)及醫院(正門)。



Schedule  
時間表

## Parking 泊車

Parking is available at a fee.  
本院提供收費停車場服務。

### Hospital address

1 Nam Fung Path,  
Wong Chuk Hang, Hong Kong

### 醫院地址

香港黃竹坑南風徑1號

## Bus 巴士

Gleneagles is within walking distance from various bus stops along Aberdeen Tunnel / Wong Chuk Hang Road and Nam Fung Road  
您可位於香港仔隧道/黃竹坑道和南風道的各個巴士站步行至港怡醫院。

Available bus services along Aberdeen Tunnel / Wong Chuk Hang Road include: 37B 37X 38 42 42C 70 72 72A 75 77 90 90C

途經香港仔隧道/黃竹坑道巴士服務包括：37B 37X 38 42 42C 70 72 72A 75 77 90 90C

Available bus services along Nam Fung Road include: 36 41A 76

途經南風道巴士服務包括：36 41A 76

## MTR 港鐵

- South Island Line 南港島綫
- Tsuen Wan Line 荃灣綫
- Island Line 港島綫
- Tung Chung Line 東涌綫
- Airport Express Line 機場快綫



Mainline 電話

+852 3153 9000

Service hotline 服務熱綫

+852 2122 1333

Fax 傳真

+852 2528 0081