

Macular (OCT) Care

黃斑點 (掃描) 護理



Gleneagles Hospital

HONG KONG

港怡醫院

Free Shuttle Service 免費專車服務

Gleneagles Hospital Hong Kong provides free shuttle bus service between MTR **Wong Chuk Hang Station** (Exit A) and the hospital (main entrance).

港怡醫院為市民提供免費專車服務往來港鐵黃竹坑站 (A出口) 及醫院 (正門)。



Free Shuttle Schedule
免費專車服務時間表

MTR 港鐵

Gleneagles is within walking distance from MTR **Ocean Park Station** (Exit C).

您可由港鐵**海洋公園站** (C出口) 步行至港怡醫院。



Hospital address
1 Nam Fung Path,
Wong Chuk Hang, Hong Kong

醫院地址
香港黃竹坑南風徑1號

Mainline 電話 +852 3153 9000
Service hotline 服務熱線 +852 2122 1333
Fax 傳真 +852 2528 0081

www.gleneagles.hk

 港怡醫院
Gleneagles Hospital Hong Kong

Macular (OCT) Care 黃斑點 (掃描) 護理



 **Gleneagles Hospital**
HONG KONG
港怡醫院

What is Yellow Spot Lesions?

甚麼是黃斑點病變?

The macula is located in the posterior part of the eye and contains the highest resolution photoreceptor cells on the retina. Yellow spot lesions, also known as age-related macular degeneration (AMD), are an eye disease that typically occurs in older individuals but can also affect younger people.

In the early stages, yellow spot lesions may not present noticeable symptoms, but they can lead to problems such as blurry vision, loss of central vision clarity, or distortion.

The main purpose of scanning yellow spot lesions is for early detection and monitoring of the disease. Optical coherence tomography (OCT) technology is commonly used for yellow spot scanning. OCT technology generates high-resolution retinal images that help evaluate the structure of the macula and detect any abnormal changes.

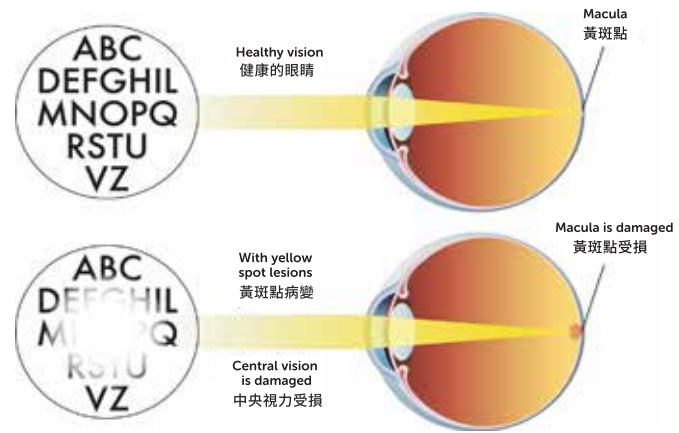
Regular yellow spot scans can assist in early detection and monitoring of disease progression.

黃斑點位於眼睛後部的黃斑區域，包含視網膜上最高解析度的視細胞。黃斑點病變是一種眼部疾病，與年齡相關，通常在年長者中發生，但也可能在較年輕的人身上出現。

黃斑點早期可能沒有明顯症狀，但可導致視力模糊、中央視野失去清晰度或歪曲等問題。

掃描黃斑點的主要目的是早期檢測和監測疾病的發展。光學相干斷層掃描 (OCT) 技術通常用於黃斑點掃描。OCT技術可以生成高解析度的視網膜影像，幫助評估黃斑區域結構和任何異常變化。

定期進行黃斑點掃描可以幫助早期檢測和監測病情變化。



Service Details 服務詳情

Macular (OCT) Care and Ophthalmologist's report
黃斑點 (OCT) 掃描及眼科醫生報告

- Visual acuity test
視力檢查
- Refraction measurement
屈光度數檢查
- Non-contact tonometry for intraocular pressure evaluation
非接觸式眼壓檢查
- Fundus photography
眼底相片拍攝
- Optical coherence tomography (OCT) scanning
光學相干斷層 (OCT) 黃斑點掃描
- Ophthalmologist's report
眼科醫生報告

A detailed eye examination will be conducted by an optometrist, followed by data analysis by an ophthalmologist. A comprehensive report will be generated based on the findings.

由眼科視光師提供詳細的眼睛檢查，並由眼科醫生分析數據及撰寫報告。

****By appointment 敬請預約****

Specialist Outpatient Ear, Nose & Throat / Eye Clinic 耳鼻喉及眼科專科門診

Location 位置 G/F, Tower A | A座地下大堂

Opening hours 開放時間

Monday - Friday 星期一至五 9:00am - 6:00pm

Saturday 星期六 9:00am - 1:00pm

Sunday and Public Holiday
星期日及公眾假期 Closed/休息

Appointment hotline 預約熱線 +852 3153 9068

Email 電郵 socceec@gleneagles.hk



Eye Clinic
眼科門診